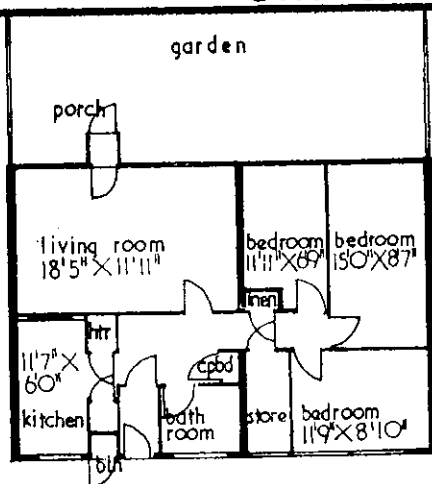


TYPE 2

SINGLE STOREY 4 PERSON



plan

4 Apartment bungalow type dwelling containing livingroom, 1 double and 2 single bedrooms, bathroom and toilet, fitted kitchen with points for gas or electric cooker. Gas fired warm air central heating to livingroom, kitchen and hall. Relay television point. Facilities for telephone connection. Enclosed garden. Garage accommodation near-by.